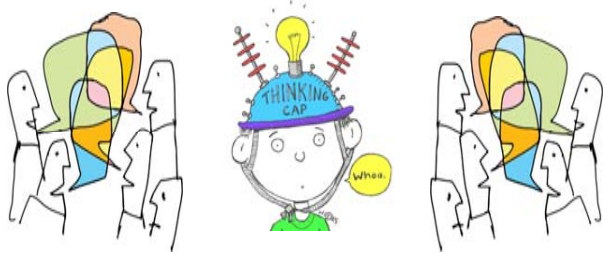


A Forthcoming Course at Essex Church

This I Believe

“What do you believe, anyway?”

Thursdays 8th, 15th and 22nd July 2010, 7-9pm



There are all sorts of beliefs that shape the way we are in the world, all sorts of things that we've experienced or learned that affect what we do and how we do it. Whilst we say that we respect each other's beliefs, and that we are a diverse community, we don't often explore those differences.

'This I Believe' is about the smaller, personal ideas and commitments that you seek to live out, that you hold to when the world gets tough, or when you are making changes that challenge your identity. You are invited to join in reflecting upon what it is you believe, and to express it in writing. There will be opportunities during the sessions to take part in some exercises, to help clarify what you'd like to say, and you can share your thoughts with others during the process.

All are welcome. If you would like to take part in this course please register with the course leader, Sarah Tinker, minister with Kensington Unitarians: email sarah@kensington-unitarians.org.uk or telephone 020 7221 6514.

Essex Church, 112 Palace Gardens Terrace, London W8 4RT
(Nearest station is Notting Hill Gate – Central, Circle, District Lines)

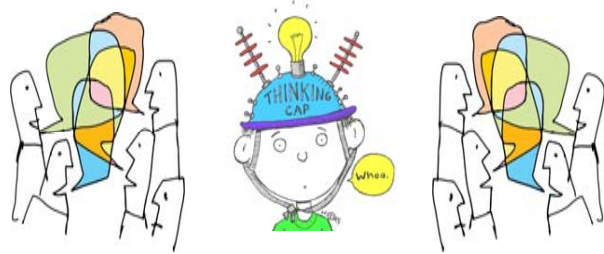
www.kensington-unitarians.org.uk

A Forthcoming Course at Essex Church

This I Believe

“What do you believe, anyway?”

Thursdays 8th, 15th and 22nd July 2010, 7-9pm



There are all sorts of beliefs that shape the way we are in the world, all sorts of things that we've experienced or learned that affect what we do and how we do it. Whilst we say that we respect each other's beliefs, and that we are a diverse community, we don't often explore those differences.

'This I Believe' is about the smaller, personal ideas and commitments that you seek to live out, that you hold to when the world gets tough, or when you are making changes that challenge your identity. You are invited to join in reflecting upon what it is you believe, and to express it in writing. There will be opportunities during the sessions to take part in some exercises, to help clarify what you'd like to say, and you can share your thoughts with others during the process.

All are welcome. If you would like to take part in this course please register with the course leader, Sarah Tinker, minister with Kensington Unitarians: email sarah@kensington-unitarians.org.uk or telephone 020 7221 6514.

Essex Church, 112 Palace Gardens Terrace, London W8 4RT
(Nearest station is Notting Hill Gate – Central, Circle, District Lines)

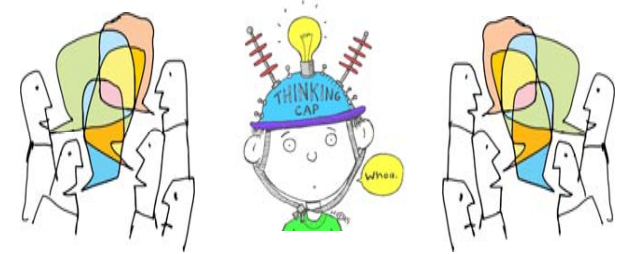
www.kensington-unitarians.org.uk

A Forthcoming Course at Essex Church

This I Believe

“What do you believe, anyway?”

Thursdays 8th, 15th and 22nd July 2010, 7-9pm



There are all sorts of beliefs that shape the way we are in the world, all sorts of things that we've experienced or learned that affect what we do and how we do it. Whilst we say that we respect each other's beliefs, and that we are a diverse community, we don't often explore those differences.

'This I Believe' is about the smaller, personal ideas and commitments that you seek to live out, that you hold to when the world gets tough, or when you are making changes that challenge your identity. You are invited to join in reflecting upon what it is you believe, and to express it in writing. There will be opportunities during the sessions to take part in some exercises, to help clarify what you'd like to say, and you can share your thoughts with others during the process.

All are welcome. If you would like to take part in this course please register with the course leader, Sarah Tinker, minister with Kensington Unitarians: email sarah@kensington-unitarians.org.uk or telephone 020 7221 6514.

Essex Church, 112 Palace Gardens Terrace, London W8 4RT
(Nearest station is Notting Hill Gate – Central, Circle, District Lines)

www.kensington-unitarians.org.uk